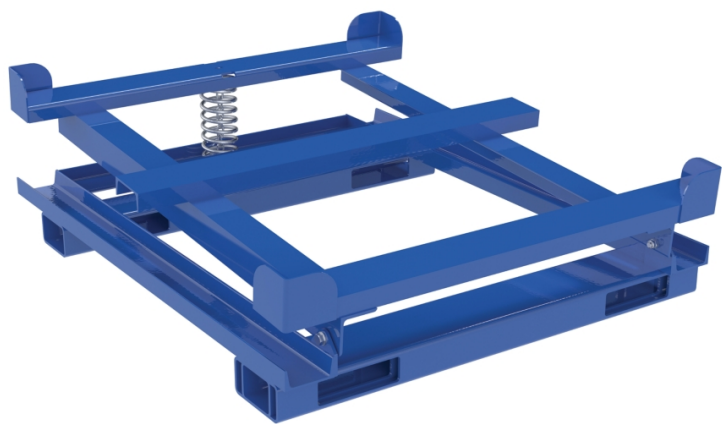


Vestil™ IBC Tote Tilt Stand with Forklift Pockets

IBC151 Steel,40.8125" W x 48.4375" L x 15.25" H,Load Capacity 4400 lbs.

IBC tote stand with forklift pockets tilts to empty your container of liquid. Features a built-in spring that allows the tote to tilt as it depletes.

- Stand provides a secure way to tilt IBC containers for complete draining
- Built-in spring lifts platform as liquid is drained from unit
- Forklift pockets; use unloaded only
- Corners are raised to secure IBC
- Steel construction with a sleek, smooth finish
- 4,400 lb. capacity



Specifications

Use With	135 gal. to 330 gal. IBC Totes
Dimensions	40.813" W x 48.438" L x 15.25" H
Load Capacity UDL	4400 lbs.
Brand	Vestil
Caster/Wheel Included	Not Applicable
Fork Truck Access	Two-Way Fork Access, Move Unloaded Only
Color	Blue
Sold as	1 each
Weight	268 lbs.
# per Pallet	3
Composition	Steel
UNSPSC	24101907
Pigalog® Page Number	Page N30

Metric Equivalent

Load Capacity UDL	1995.8 kg
-------------------	-----------

Weight	121.6 kg
Dimensions	104cm W x 123cm L x 39cm H

Technical Information



New Pig

World's best stuff for leaks, drips and spills.

One Pork Avenue • Tipton, PA 16684-0304

1-855-493-4647 • Fax: 1-800-621-7447 • newpig.com • hothogs@newpig.com