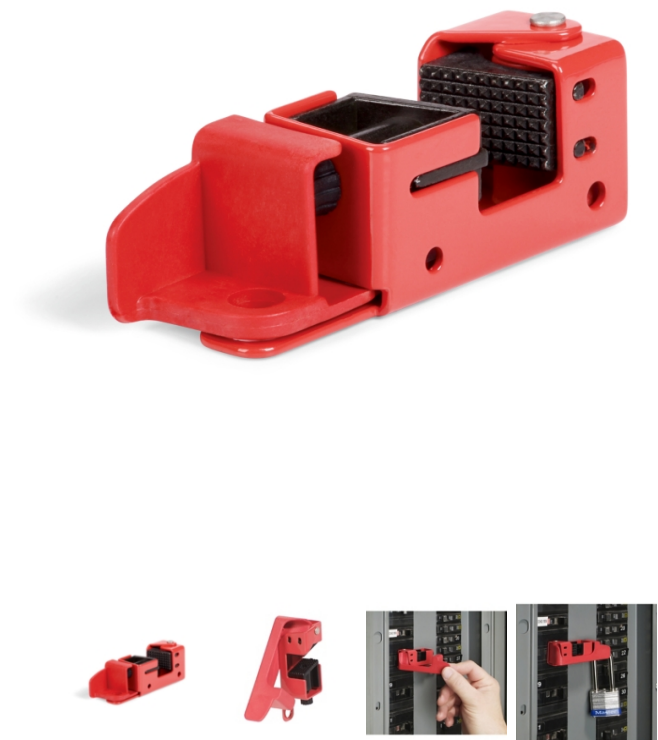


Grip Tight™ Circuit Breaker Lockout

LCK241 Circuit Breaker Lockout, For 240V Breakers, 277 V Breakers and 600V Breakers, 1 each

Secure breaker toggles to improve safety and help meet lockout/tagout (LOTO) regulations.

- Securely disables electrical shut-offs by putting breaker toggles under lock and key
- Grip Tight design provides superior hold strength; thumb turn and clamp handle offer a custom, secure fit
- Slim profile allows side-by-side toggle lockout
- Durable powder-coated steel and reinforced polymer construction allow use in harsh environments
- Installs easily to instantly safeguard machinery and equipment
- Accepts one padlock or hasp (not included)
- This simple lockout/tagout solution will help your facility meet life-saving regulations
- Fits the taller, wider toggles on most 240V, 277V and 600V breakers



Master Lock.

Specifications

Use With	240V Breakers, 277 V Breakers and 600V Breakers
Brand	Master Lock
Lockout Style	Circuit Breaker Lockout
Temperature Limit	-50°F (-46°C) to 360°F (183°C)
Sold as	1 each
Weight	1 lb.
Color	Red
Composition	Steel, Polymer
UNSPSC	46171511

Metric Equivalent

Weight	.5 kg
--------	-------

Technical Information

Technical Documents

29 CFR 1910.147