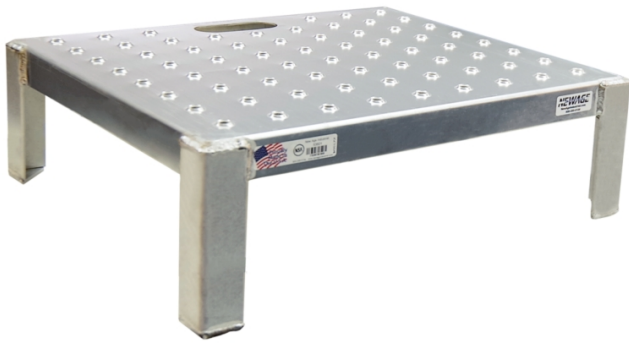


Ergonomic Work Platform

MTL1220 For 8" Elevation, 24" W x 20" L x 8" H

Safety and comfort are well within reach when you work from this elevated, aluminum-welded stand with anti-slip deck for confident traction.



- Elevated stand makes reaching while working a more comfortable experience by reducing ergonomic strain
- Perforated top creates an anti-slip deck
- Durable, aluminum welded design; reinforced base
- Cutout handle for easy transport; lightweight
- Elevated platform can be used to keep worker's feet dry above wet floor
- No foreign material that can chip off
- Can be easily sanitized through traditional methods; won't rust if hosed off and left to dry



NEW AGE INDUSTRIAL

Specifications

Use With	8" Elevation
Dimensions	24" W x 20" L x 8" H
Brand	New Age Industrial
Weight Capacity	300 lbs.
Sold as	1 each
Weight	14 lbs.
Color	Silver
# per Pallet	14
Composition	Aluminum
UNSPSC	30191505

Metric Equivalent

Weight	6.4 kg
Dimensions	61cm W x 51cm L x 20cm H

Technical Information

USOnly

This product can ONLY be shipped to the United States.



New Pig

World's best stuff for leaks, drips and spills.

One Pork Avenue • Tipton, PA 16684-0304

1-855-493-4647 • Fax: 1-800-621-7447 • newpig.com • hothogs@newpig.com