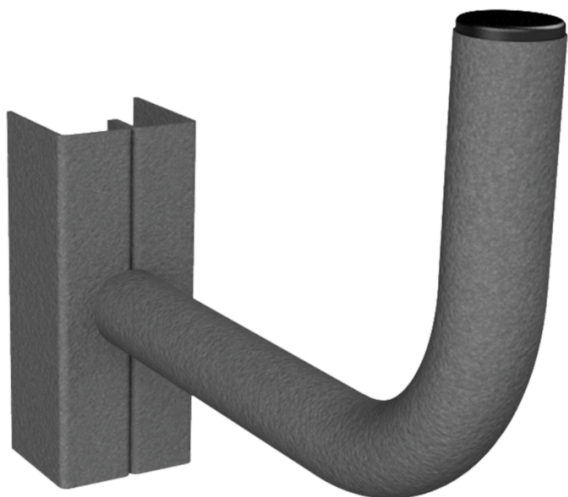


Hanger Arm for Durham® Adjustable A-Frame Cart

MTL537 For Adjustable Tray A-Frame Cart, 1 each

Count on these strong hanger arms designed to fit your Durham Adjustable A-Frame Cart.

- Compatible with Durham adjustable A-frame cart
- Built with 14-gauge steel
- Textured powder-coat finish



Specifications

Use With	Adjustable Tray A-Frame Cart
Dimensions	2.5" W x 12" L x 9.25" H
Brand	Durham Mfg
Sold as	1 each
Weight	2 lbs.
Composition	Steel
Color	Gray
UNSPSC	56111905

Metric Equivalent

Weight	.9 kg
Dimensions	6.4cm W x 30cm L x 23cm H

Technical Information

US Only

This product can ONLY be shipped to the United States.



New Pig

World's best stuff for leaks, drips and spills.

One Pork Avenue • Tipton, PA 16684-0304

1-855-493-4647 • Fax: 1-800-621-7447 • newpig.com • hothogs@newpig.com