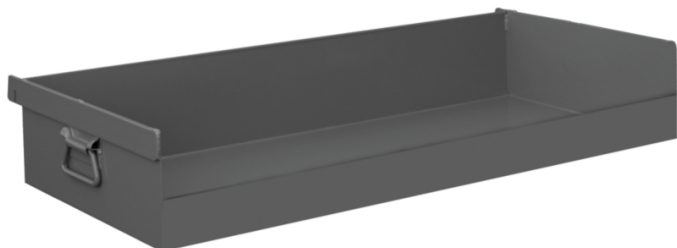


## Closed Front Tray for Durham® Adjustable A-Frame Cart

MTL538 For Adjustable Tray A-Frame Cart, 1 each

Add organization to your Durham Adjustable A-Frame Cart with this strong, 16-gauge-steel closed front tray.

- Compatible with Durham Adjustable A-Frame Cart
- 16-gauge steel holds up to 250 pounds
- Textured powder-coat finish



### Specifications

Use With	Adjustable Tray A-Frame Cart
Dimensions	16.3" W x 36.3" L x 6" H
Brand	Durham Mfg
Sold as	1 each
Weight	25 lbs.
# per Pallet	20
Color	Gray
Composition	Steel
UNSPSC	56111905

### Metric Equivalent

Weight	11.3 kg
Dimensions	41cm W x 92cm L x 15cm H

### Technical Information

#### US Only

This product can ONLY be shipped to the United States.