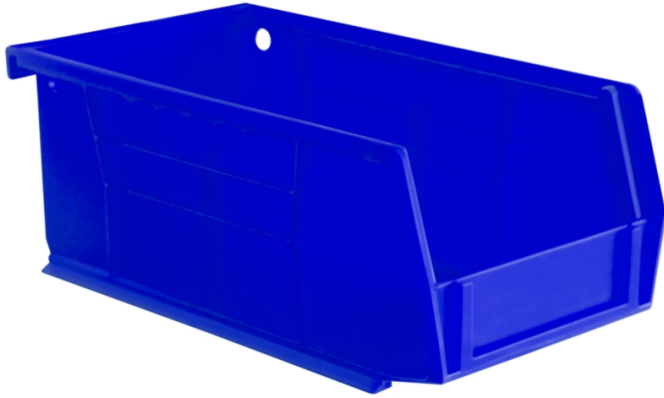


Durham® Hook-On-Bin

MTL558 For Louvered Panels or Stacking, 24 per package



Swap out or add to select Durham products with these replacement Durham Hook-On-Bins.

- Plastic construction is lightweight for easy rearranging but sturdy to hold up to 10 lbs.
- Compatible with select sizes of Durham products, including carts, cabinets and shelves
- 24 bins in each pack



Item#	Description	Dimensions	Weight
MTL558-BL		4" W x 7" L x 3" H	6 lbs.
MTL558-RD		4" W x 7" L x 3" H	6 lbs.
MTL558-YW		4" W x 7" L x 3" H	6 lbs.

Metric Equivalent:

Item#	Description	Dimensions	Weight
MTL558-BL		10cm W x 18cm L x 7.6cm H	2.7 kg
MTL558-RD		10cm W x 18cm L x 7.6cm H	2.7 kg
MTL558-YW		10cm W x 18cm L x 7.6cm H	2.7 kg

Specifications

Style	Hook-on Bin
Use With	Louvered Panels or Stacking
Dimensions	4" W x 7" L x 3" H
Brand	Durham Mfg
Material	Plastic
Special Feature	Hopper Front; Stacking
Sold as	24 per package
Weight	6 lbs.
# per Pallet	54

Composition

Polypropylene

UNSPSC

24112205

Metric Equivalent**Weight**

2.7 kg

Dimensions

10cm W x 18cm L x 7.6cm H

Technical Information**US Only**

This product can ONLY be shipped to the United States.

**New Pig**

World's best stuff for leaks, drips and spills.

One Pork Avenue • Tipton, PA 16684-03041-855-493-4647 • Fax: 1-800-621-7447 • newpig.com • hothogs@newpig.com