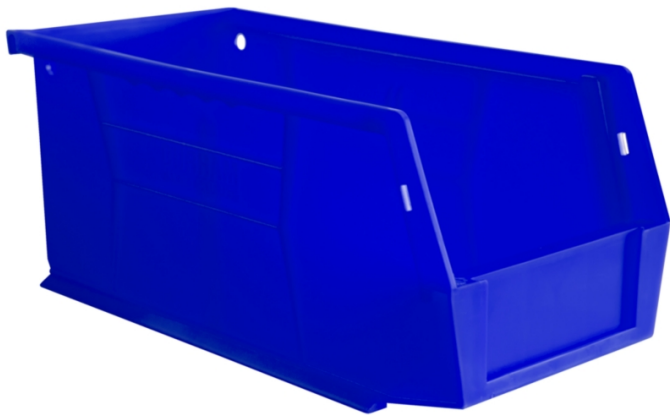


Durham® Hook-On-Bin

MTL559 For Louvered Panels or Stacking,12 per package

Swap out or add to select Durham products with these replacement Durham Hook-On-Bins.

- Plastic construction is lightweight for easy rearranging but sturdy to hold up to 30 lbs.
- Compatible with select sizes of Durham products, including carts, cabinets and shelves
- 12 bins in each pack



Item#	Description	Dimensions	Weight
MTL559-BL		6" W x 11" L x 5" H	10.32 lbs.
MTL559-RD		6" W x 11" L x 5" H	10.32 lbs.
MTL559-YW		6" W x 11" L x 5" H	10.32 lbs.

Metric Equivalent:

Item#	Description	Dimensions	Weight
MTL559-BL		15cm W x 28cm L x 13cm H	4.7 kg
MTL559-RD		15cm W x 28cm L x 13cm H	4.7 kg
MTL559-YW		15cm W x 28cm L x 13cm H	4.7 kg

Specifications

Style	Hook-on Bin
Use With	Louvered Panels or Stacking
Dimensions	6" W x 11" L x 5" H
Brand	Durham Mfg
Material	Plastic
Special Feature	Hopper Front; Stacking
Sold as	12 per package
Weight	10.32 lbs.
# per Pallet	35

Composition	Polypropylene
UNSPSC	24112205

Metric Equivalent

Weight	4.7 kg
Dimensions	15cm W x 28cm L x 13cm H

Technical Information

USOnly

This product can ONLY be shipped to the United States.



One Pork Avenue • Tipton, PA 16684-0304
1-855-493-4647 • Fax: 1-800-621-7447 • newpig.com • hothogs@newpig.com