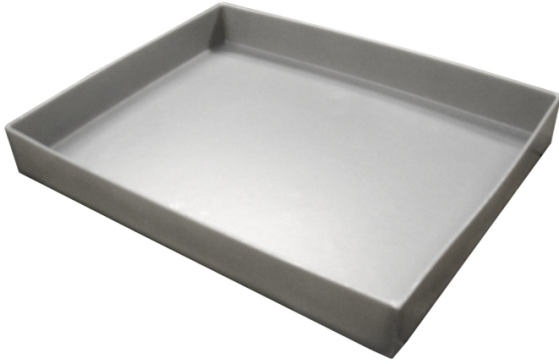


Polyethylene Flat Tray

PAK831 Polyethylene, 17" W x 21.5" L x 1.5" H, Sump Capacity 2.25 gal.



Store items on these Bayhead trays made of durable polyethylene that withstands temperatures up to 150 degrees Fahrenheit.

- Flat bottom
- Durable polyethylene material
- Withstands temperatures up to 150 degrees Fahrenheit

Specifications

Style	Standard
Dimensions	17" W x 21.5" L x 1.5" H
Sump Capacity	2.25 gal.
Brand	Bayhead Products
Interior Bottom Dimensions	21" L x 16" W
Tray Type	Polyethylene
Color	Gray
Sold as	1 each
Weight	2.5 lbs.
# per Pallet	50
Composition	Polyethylene
UNSPSC	41122808

Metric Equivalent

Sump Capacity	8.5 L
Weight	1.1 kg
Dimensions	43cm W x 55cm L x 3.8cm H

Technical Information

US Only

This product can ONLY be shipped to the United States.