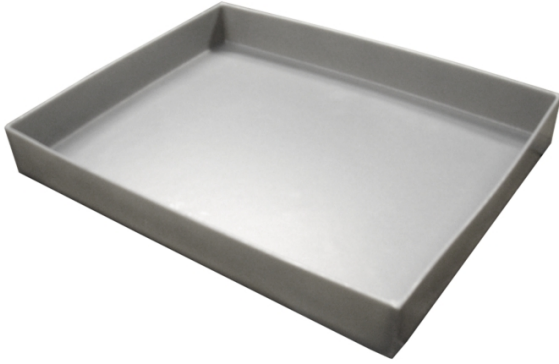


Polyethylene Flat Tray

PAK833 Polyethylene, 21" W x 21" L x 2" H, Sump Capacity 3.35 gal.



Store items on these Bayhead trays made of durable polyethylene that withstands temperatures up to 150 degrees Fahrenheit.

- Flat bottom
- Durable polyethylene material
- Withstands temperatures up to 150 degrees Fahrenheit

Specifications

Style	Standard
Dimensions	21" W x 21" L x 2" H
Sump Capacity	3.35 gal.
Brand	Bayhead Products
Interior Bottom Dimensions	20.5" L x 20.5" W
Tray Type	Polyethylene
Color	Gray
Sold as	1 each
Weight	3.5 lbs.
# per Pallet	50
Composition	Polyethylene
UNSPSC	41122808

Metric Equivalent

Sump Capacity	12.7 L
Weight	1.6 kg
Dimensions	53cm W x 53cm L x 5.1cm H

Technical Information

USOnly

This product can ONLY be shipped to the United States.