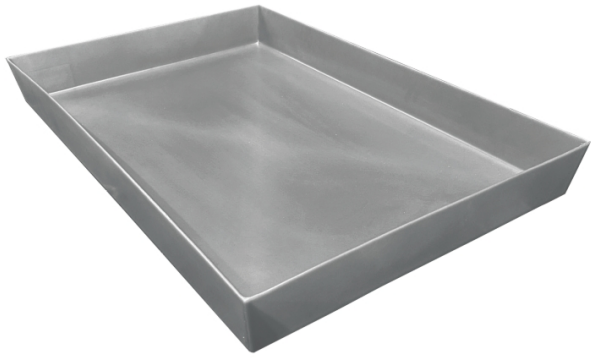


## Polyethylene Flat Tray

PAK846 Polyethylene, 25.75" W x 38.75" L x 4" H, Sump Capacity 15 gal.



Store items on these Bayhead trays made of durable polyethylene that withstands temperatures up to 150 degrees Fahrenheit.

- Flat bottom
- Durable polyethylene material
- Withstands temperatures up to 150 degrees Fahrenheit

### Specifications

Style	Standard
Dimensions	25.75" W x 38.75" L x 4" H
Sump Capacity	15 gal.
Brand	Bayhead Products
Interior Bottom Dimensions	37" L x 24.5" W
Tray Type	Polyethylene
Color	Gray
Sold as	1 each
Weight	6 lbs.
# per Pallet	25
Composition	Polyethylene
UNSPSC	41122808

### Metric Equivalent

Sump Capacity	56.8 L
Weight	2.7 kg
Dimensions	65cm W x 98cm L x 10cm H

### Technical Information

#### US Only

This product can ONLY be shipped to the United States.