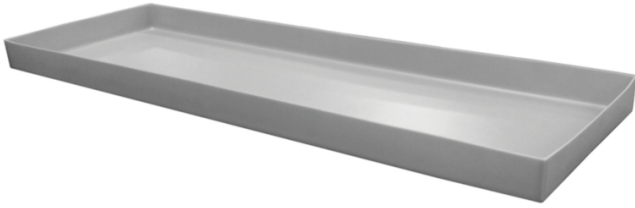


Polyethylene Flat Tray

PAK848 Polyethylene, 24" W x 75.5" L x 4" H, Sump Capacity 29 gal.

Store items on these Bayhead trays made of durable polyethylene that withstands temperatures up to 150 degrees Fahrenheit.

- Flat bottom
- Durable polyethylene material
- Withstands temperatures up to 150 degrees Fahrenheit



Specifications

Style	Standard
Dimensions	24" W x 75.5" L x 4" H
Sump Capacity	29 gal.
Brand	Bayhead Products
Interior Bottom Dimensions	74" L x 23.5" W
Tray Type	Polyethylene
Color	Gray
Sold as	1 each
Weight	15 lbs.
# per Pallet	6
Composition	Polyethylene
UNSPSC	41122808

Metric Equivalent

Sump Capacity	109.8 L
Weight	6.8 kg
Dimensions	61cm W x 192cm L x 10cm H

Technical Information

US Only

This product can ONLY be shipped to the United States.