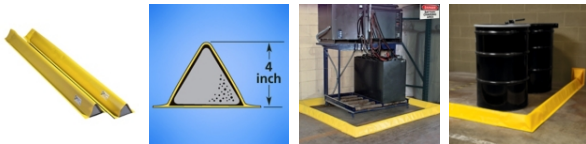
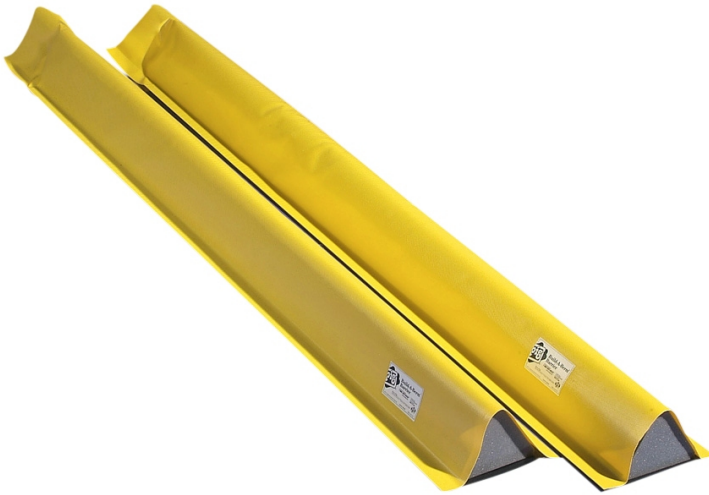


## PIG® Build-A-Berm® Barrier Straight Section

PLR258 Ideal For Long-Term Custom Containment, 7.25" x 5' x 4", 2 per box

Build a semi-permanent barrier around your machinery or storage areas with our crush-resistant spill berms.



- Barriers can be constructed into a semi-permanent, high-visibility barrier that's exactly the size and shape you need - indoors or out
- Pliable open-cell foam barrier springs back into shape after you walk or roll over it with light, wheeled equipment
- Durable, 18-oz. all-vinyl covering resists oils, coolants and most chemicals
- Cut to length with utility knife; for best installation results, secure to a smooth, sealed surface with sealant (sold separately) and join seams with vinyl cement (sold separately)
- Combine with Build-A-Berm Barrier Corners (sold separately) to create liquid-proof containment; ends overlap and seams can be sealed together with Industrial-Strength Vinyl Cement (sold separately)
- Contain leaks and spills around your machinery without building expensive concrete curbs or cutting and installing angle iron
- High-visibility yellow color draws attention to barrier for increased safety
- Easy removal requires only a flat-bladed shovel
- Great for use around battery charging stations, machinery or any other leak-prone areas
- 4"-high barriers are ideal for surrounding areas with high volumes of liquid
- Sealant, industrial-strength vinyl cement and barrier corner pieces sold separately



### Specifications

Style	Straight Section
Dimensions	7.25" W x 5' L x 4" H
Barrier Height	4" H
Brand	PIG
Ideal For	Long-Term Custom Containment

<b>Install/Deploy Type</b>	Glued In Place Barrier
<b>Color</b>	Yellow
<b>Temperature Limit</b>	Works from -22°F to 160°F
<b>Traffic</b>	Foot Traffic
<b>Sold as</b>	2 per box
<b>Weight</b>	5.75 lbs.
<b>New Pig Patent</b>	5,820,297
<b># per Pallet</b>	36
<b>Composition</b>	Cover: 18 oz. Vinyl-Coated Fabric Core: Open-Cell Polyurethane Foam
<b>UNSPSC</b>	24101907
<b>Pigalog® Page Number</b>	<u><a href="#">Page 151</a></u>

## Metric Equivalent

<b>Weight</b>	2.6 kg
<b>Dimensions</b>	18cm W x 152cm L x 10cm H

## Technical Information

### Certifications, Approvals and Ratings

UFC Article 64 Section 6404.4

### Technical Documents

[PIG Build-A-Berm® Barrier](#)

[Instructions for Using PIG® Build-A-Berm® Barrier](#)

[SPCC: 8 Things You Need to Know](#)

[40 CFR 112.7](#)

[40 CFR 122.26](#)

[40 CFR 264.175](#)



**One Pork Avenue • Tipton, PA 16684-0304**

1-855-493-4647 • Fax: 1-800-621-7447 • [newpig.com](http://newpig.com) • [hothogs@newpig.com](mailto:hothogs@newpig.com)